



BROMLEY HEATH INFANT SCHOOL

Little steps, Big strides, Exciting journey

NEWSLETTER 4

Term 2 - December 2009



C.O.R.F Charity Shoebox Collection

I would like to thank everyone who filled a shoe box for the charity collection. We collected 97 shoeboxes and have received a thank you letter from the C.O.R.F organisers.

I am sure there will be some very happy children across Europe this Christmas because of your efforts.



Spare Clothes

We keep a stock of spare uniform for the children to change into if they get wet or muddy. Unfortunately we have very little larger sized trousers to fit children in Y2 (7-8yr olds). **If you have any spare uniform, in larger sizes, that could be donated to school it would be much appreciated.** Please send it to the school office.

If you have any borrowed school uniform at home could you please wash it and return it to school.



Diary Dates

We have a dates calendar on our website <http://www.bromleyheathinfantschool.co.uk/> that is regularly updated but here are a few important dates for you to note.

Term 2 ends	Friday 18 th Dec
Term 3 starts	Monday 4 th Jan 2010
Gardening Club 3 starts	Wednesday 13 th Jan



Healthy Schools

As you know we have 'Healthy Schools' accreditation. As part of the scheme we endeavour to encourage the children to adopt healthy lifestyles.

Could I please ask you to support us in keeping our accreditation by ensuring that lunchboxes and break time snacks are of a healthy nature eg: fruit, nut free cereal bars, dried fruit or cheese. No chocolate bars or chocolate biscuits please.



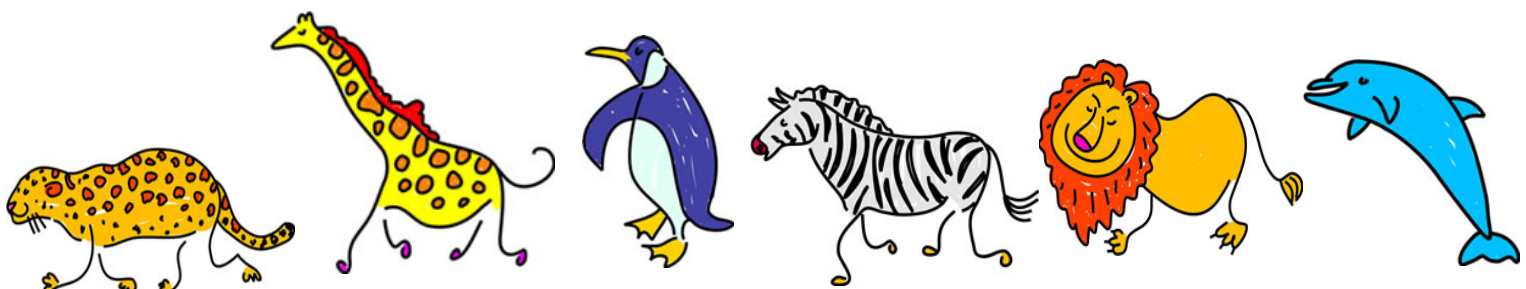
Christmas Post

The children's Christmas post box has been in the entrance hall since 7th December. Please remember to put the child's name and class on the envelopes, as we have many Daniel's etc. in school. Also could you let the children know that all Christmas cards are to be placed in the post box and not delivered personally by the children.



Christmas Costumes

I would like to say a very big thank you to Mrs Houghton and the team of parents and relations who so kindly made us new Nativity Costumes for our production this year. The children will get many years of use from them. Thank you again from everyone at Bromley Heath Infant School.





Child Safety

During our recent parents' coffee morning we discussed the use of the timber trail before and after school. There was a fifty fifty split regarding whether the children should use the equipment or not.

After consultation with the Local Authority Health and Safety department, I have received the following advice.

The timber trail has been constructed for the use of children aged 4-7years old and is unsuitable for children older or younger than the ages stated. If a child injures themselves whilst using the equipment the school cannot be held responsible.

Banning the use of the equipment and the subsequent policing is proving impossible. I therefore advise that should you allow your child to use the timber trail, before or after school, it is at your own risk and you are responsible for ensuring their safety. So please ensure that you are watching them closely at all times.



Staffing

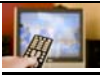
We have welcomed Ms Sophie Prestwood to Bromley Heath Infant School, as Penguin class teacher, to cover Mrs Barber's maternity leave. She has settled very quickly into her new role and the children are enjoying having her as their class teacher.

New Year Changes

We are all looking forward to Mrs Chrystal's return to school after the Christmas holiday and I am looking forward to returning to Leopard class.

I would like to thank Miss Fletcher and Mrs Gregory for their support and hard work in Leopard class over the past two terms, the children will miss them but they will still be teaching in the school in their different capacities.

We have a **vacancy** for a part time (2days per week) Lunchtime Supervisor and we are always in need of **Casual Lunchtime Supervisors** for occasional cover. If you are interested please contact Mrs Drake via the school office.



Transition

Thank you again to those of you who returned the transition evaluation sheets. Having analysed the results I am pleased to let you know the results.

The overwhelming response to the transition programme was very positive. Everyone felt it benefited their child and made the move easier for them.

Areas that we will be looking into and considering for next year's transition are; ensuring parent's meet the teacher date is provided earlier; PE kit requirements are indicated to parents before the new school year starts; providing class lists to all parents. These issues will be discussed with staff and considered when we organise the transition for 2010.



School Lunch Payment

Could I please remind you that if you pay for your lunches on a weekly basis the payment **must** be sent into school on Mondays, as the kitchen need to know numbers for their orders. Payments cannot be accepted during the week, unless your child has been absent due to illness.



Charity Collections

We have received a thank you from the Royal British Legion for collecting £67.97 for the Poppy Appeal.

Our Christmas Production donation has been sent to 'Hope for Tomorrow' a mobile chemotherapy unit which provides local support for cancer sufferers. More information can be found on their website www.hopefortomorrow.org.uk . We collected £ 172.55 Thank you very much for your generosity.



Congratulations to Mrs Barber

We would like to announce the arrival of Mrs Barber's new baby girl. Baby Grace was born on the 7th December and mum and baby are doing well. We have sent them our love and best wishes from everyone at Bromley Heath Infant School and look forward to seeing them both in the near future.

If anyone knows of a good home for the school Christmas tree please contact Mrs Dodge in the school office. The tree would need to be taken on the last day of term.

