



NEWSLETTER 3

Term 2 - November 2009



Allergies in school

We want school to be a safe environment for all children regardless of any allergies they may suffer. Like many schools we have children in school who have allergic reactions to nuts, wheat, eggs and other foods which may be life threatening. As a result, all staff attend annual training on the use of an EpiPen which would be used in the case of anaphylactic shock.

I am confident that as parents you would agree that keeping **ALL** children safe is a priority. Therefore as a school community we will strive to be a "**nut aware**" school and avoid having or using nuts in school. This has implications for everyone, to you as parents when preparing a snack or packed lunch for your child, or giving birthday sweets at the classroom door and for staff when planning cooking or food preparation activities.

We review our procedures on an annual basis and remind staff to be **nut aware** when planning food activities in school. I also discuss this matter with the school meals service, who are also **nut aware**. I am now asking you to support us with this very important matter.



Parent Governor Vacancy

The governors would like to thank Michele Llewellyn and Mark Lester who have both recently finished their term on the governing body. As a result we now have a vacancy for a parent governor and a community governor.

A *parent governor* is a representative or typical parent, not a representative of the parents. They will normally be a parent with a child at the school and have been elected by the parents of children at the school.

Elections are held by the school when there is a vacancy or when a parent governor's term of office has come to an end. Each candidate must complete a nomination paper supported by two fellow parents. Should more than one parent nominate themselves for a vacancy, an election takes place by secret ballot.

If you are interested in becoming a governor nomination forms are available from the school office.

If you would like more information on the role of a governor please contact me via the office or speak to Heather Williams (Penguin Class) or Daksha Mistry (Leopard Class) both of whom are governors.



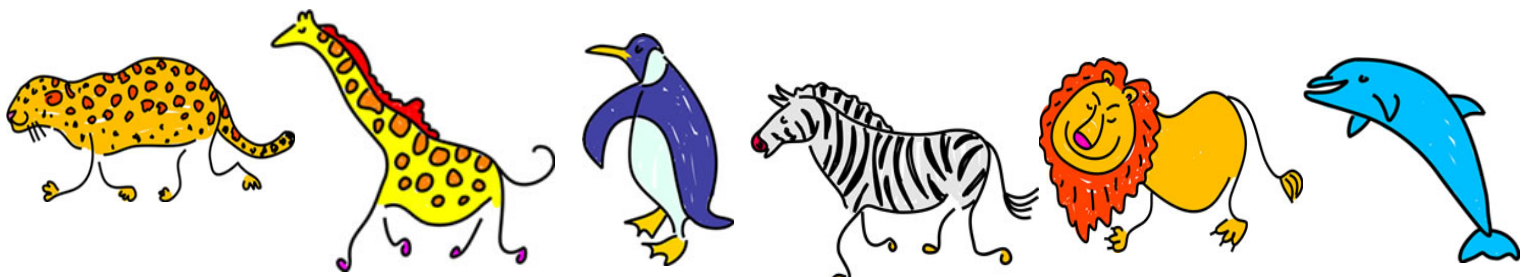
Curriculum Remodelling

Mrs Ashman recently presented information, to lecturers at Bath Spa University, about the curriculum remodelling work we have undertaken at BHIS. They were looking for good practice in curriculum remodelling in primary education and were very impressed with our curriculum. I would like to thank Mrs Ashman for promoting our school in such a positive way.



Staffing

We say goodbye to Mrs Barber who will be starting her maternity leave on 13th November. We wish her well and look forward to seeing her and the new baby before Christmas.





Morrison's Lets Grow Vouchers

We have been collecting Morrison's lets grow vouchers in school. Gardening club will use the vouchers to buy some equipment for our school garden. The scheme is now coming to an end and we need any vouchers you have at home by Wednesday 11th Nov.



Diary Dates

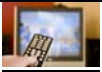
We have a dates calendar on our website <http://www.bromleyheathinfantschool.co.uk/> that is regularly updated but here are a few important dates for you to note.

- 7th Nov - Friends of BHIS - table top sale
- 11th Nov - Gardening Club2 starts
- 26th Nov - Parents coffee morning @ 9.00am
- 3rd Dec - Y2 Visit to Bristol Cathedral
- 4th Dec - Friends of school Christmas Bazaar (after school)
- 7th Dec - Foundation Stage Christmas production @ 9.30am
- 7th Dec - KS1 Christmas production @ 6.00pm
- 8th Dec - KS1 Christmas production @ 9.30am
- 8th Dec - Foundation Stage visit to the Arboretum
- 9th Dec - School Christmas Lunch
- 14th Dec - Parent helpers tea party @ 2.30pm
- 15th Dec - Class Christmas parties
- 18th Dec - End of term**



Reading Bugs

I would like to say a big thank you to all of you who have sent pictures of the children and yourselves reading in unusual places. They certainly show that the children still have an interest in reading. The pictures will be on display in the library by the end of the week so please feel free to come in and see them. Parents' favourite childhood books will also be on display and Mallory Towers seems to be emerging as a firm favourite with you. Please feel free to keep sending different pictures throughout the school year, reading to Santa could be fun!



Transition

We are still collecting responses to the transition program and thank you to those of you who have returned yours already. There has been a very positive response to the program from the replies received so far. We will analyse the results and let you know them later in the term.



Attendance

The late book is now in operation. If your child is late for school for any reason, could you please report to the office and sign the late book. Those few minutes lost through lateness each day can mount up to a lot of missed education and really unsettle your child for the rest of the day. The school doors open at 8.50am and school starts at 9.00am. If you arrive after this time please report to the office.



Giraffe class

Giraffe class would like to say thank you to those of you in other classes who are using the wider path at the side of Leopard class when leaving the school. The situation is slightly improved, but if I could ask you again to use the wider path rather than the path outside giraffe class as this helps the children leave school safely at the end of the day.

