



BROMLEY HEATH INFANT SCHOOL

Little steps, Big strides, Exciting journey

NEWSLETTER 2

Term 1 - 9th October 2009



Harvest

A big thank you to those of you who contributed to our Harvest collection.

This year we decided to collect money rather than food, for the **Seeds for Africa** charity. They provide seeds, tools and training on how to run a garden for school children in Africa. This enables them to become more self sufficient and it helps their families too.

We collected **£227.39** so thank you all again for your generosity.



Be Seen Assembly Thursday 15th Oct

Now that the mornings and evenings are getting darker and the clocks will be changing soon, we have organised a **Be Seen Assembly** to highlight the need to be visible in the dark.

The road safety team will be conducting the assembly and will have a range of reflective/high visibility aids on sale.

The sale will take place in the hall before school at 8.35am on the 15th October.



Dates

The school calendar, on the website, <http://www.bromleyheathinfantschool.co.uk/> is regularly updated by Mrs Hulm but here are a few important dates for your diaries.

19/10 - Parent Consultation meetings 2pm-5pm

20/10 - Parents Play meeting 6.30pm

21/10 - Y2 Trip to the Madir

23/10 - End of term 1. PLEASE NOTE THIS IS A ONE WEEK HOLIDAY, NOT 10 DAYS AS IN THE LAST 2 YEARS. We start school again on Monday 2nd November.

3/11 - Shoebox collection day

Coffee Meeting Dates

Here are the coffee meeting dates for the rest of the year.

Term 2 - 26th Nov @ 9.00am

Term 3 - 28th Jan @ 9.00am

Term 4 - 18th Mar @ 2.30 pm

Term 5 - 13th May @ 9.00 am

Term 6 - 1st July @ 2.30 pm

I would like to thank the parents who volunteered to act as class representatives and advertise the coffee mornings for us.



Gardening Club

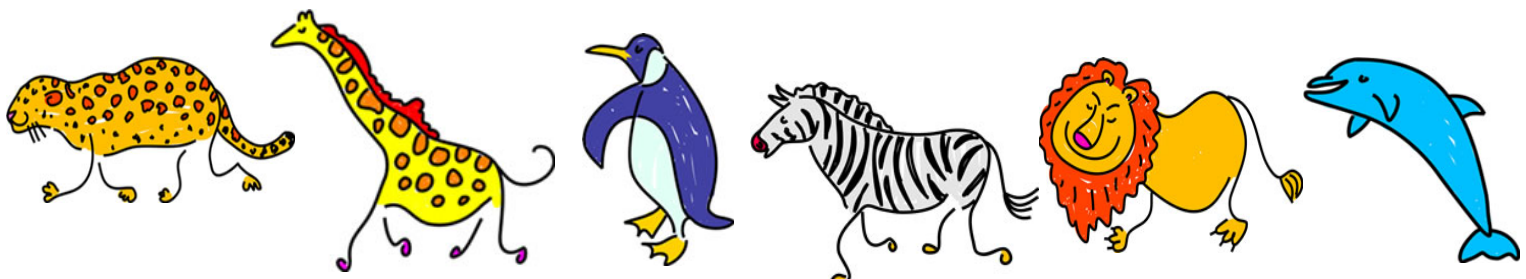
Mr Calder and gardening club need donations of compost, manure and potting compost for the school garden. If you are able to help we would be very grateful.

Please bring the donations to school and Mr Calder will let you know where they need to be stored.



Christmas Costumes

We are currently updating our Christmas costumes and require a team of parents, grandparents or older siblings who would be willing to sew some of the costumes. Mrs Houghton has kindly agreed to co-ordinate the team. If you, or one of your family, are able to help could you please let Mrs Park or Mrs Houghton (penguin class) know.





Child Safety Polite Reminder

I have been approached by a number of parents and asked to remind you about activity in the playground before and after school.

- The timber trail should not be used by the children before or after school as you will not be covered by insurance.
- Scooters that have been ridden to school should be parked in the scooter racks and not ridden around the playground.
- Ball games are not to be played in the playground before school. If the children find a ball could they please put them in the fenced area outside the classrooms.
- Could I remind you to please close the side gates if you are one of the last parents to leave the playground.

These precautions are to help keep your children safe in the playground, especially as there are toddlers around at this time. I hope you will be able to support us with this and help every child have a happy start to their school day.



Attendance

Can I please remind you that the school doors open at 8.50am and registration takes place at 9.00. Anyone arriving after this time must take their child to the school secretary, via the main entrance, who will direct them to their classroom.

From Monday 2nd November we will be operating a **Late Book**. This will involve you signing your child in at the school office and saying why they are late.

The few minutes lost through lateness each day can mount up to a lot of missed education and really unsettles your child for the rest of the day. The Educational Welfare Officer will be checking this book alongside the registers when she visits the school.



Staffing

Mrs L. Williams, Lunchtime supervisor has decided to retire and she will be sadly missed. Her last day will be 23rd October.

We have now appointed a Y1 teacher to cover Mrs Barbers maternity leave. **Miss S Prestwood** will start as Penguin class teacher on Monday 16th November and be in post until Mrs Barber returns.



Email Addresses

As you know, as part of our Eco Schools ethos, we are trying to cut down on paper. If you would like to receive your newsletter electronically please let the school office have your email address.

If you have already agreed to this, could you ensure that you have updated us of any changes to your email address.

New parents in Giraffe and Zebra class will receive a separate sheet asking for their details.



Inhalers/Medicines

If your child has an inhaler or allergy medication in school, could you please check that it is up to date and it has not passed its expiry or use by date.



Friends of School Reminders

15th October - AGM @ 7.30 in the school hall. All welcome.

7th November - Table Top Sale



Can you help Giraffe class?

Giraffe class currently leave school via the side door, unfortunately the path is very narrow on that side of the school and they are getting lost and crushed as they try and find their parents at the end of the day. Could I ask parents with children in other classes to try and use the wider path at the side of Leopard class when leaving the school. I hope you will be able to help us and keep the children in Giraffe class safe. Thank you in anticipation from the children in Giraffe class.

